

Flowers

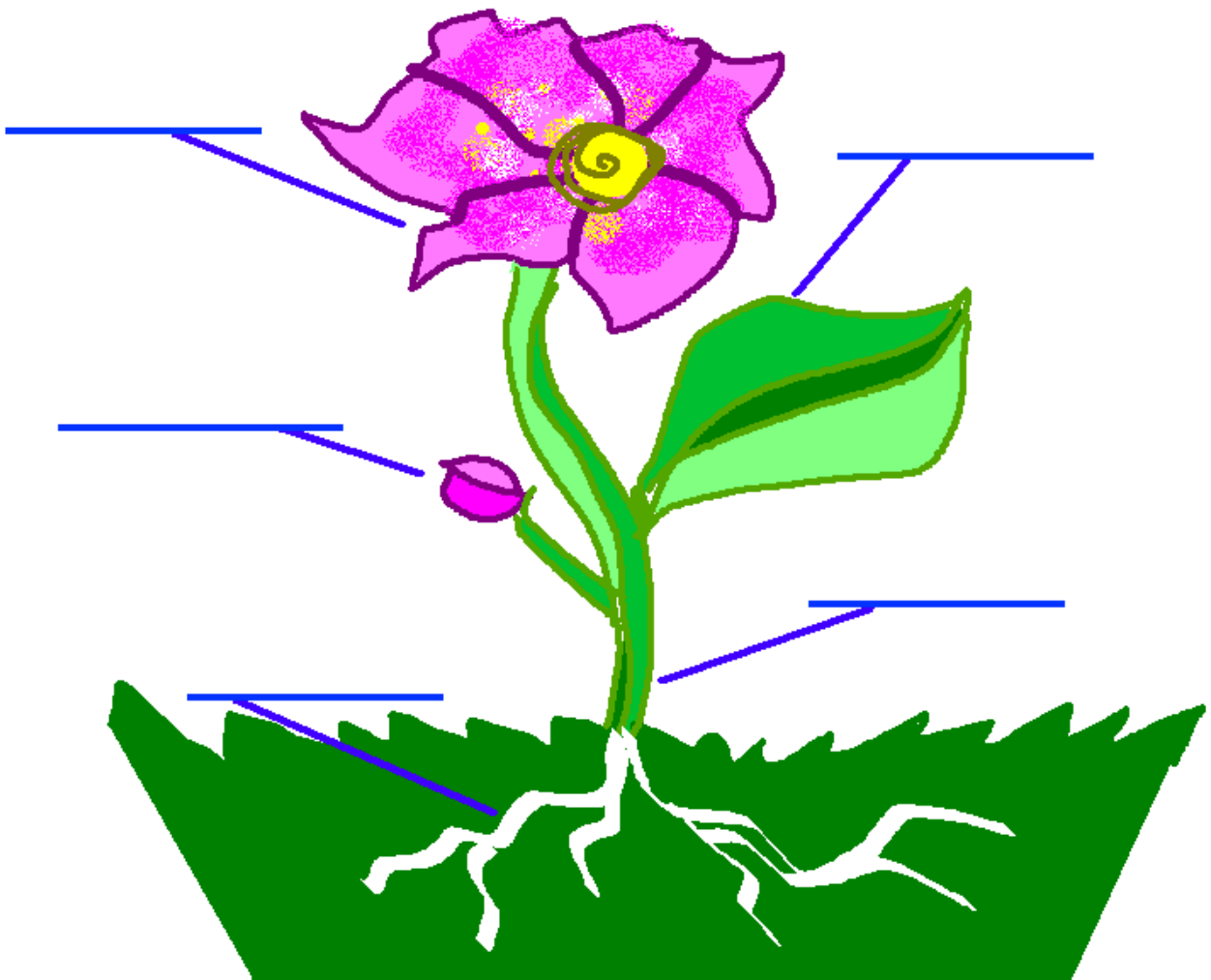
Tudor Place's garden is full of flowers. Complete this activity to learn more about flowers and to practice describing flowers using color and shape descriptors.

Procedure

1. Distribute the "Parts of the Flower" worksheet.
2. If students do not already know the parts of the flower, explain the parts of the flower and explain that each part has a different use. Complete the worksheet together.
 - a. Roots: anchor and support the plant, take in water and food and store food
 - b. Stems: hold up leaves to the light, transport food and water through the plant
 - c. Leaves: catch sunlight and use it to make food
 - d. Flowers: produce seeds to grow new flowers and attract pollinators (bees)
 - e. Buds: baby flowers
3. Distribute the "Naming Flowers" worksheet.
4. Explain to students that some flowers are given names based on what they look like. Instruct students to identify the colors and shapes they see in the flower and then create their own name for the flower based on what they see.
 - a. Optional: compare to the actual name of the flower
 - i. Flower 1: Balloon Flower
 - ii. Flower 2: Bleeding Hearts
 - iii. Flower 3: Black-Eyed Susan
5. Walk around your neighborhood to find flowers (they should just be starting to bloom!). For each flower you find, name the parts of the flower, name the colors and shapes you see on the flower, and make up a new, creative name for the flower.

Parts of a Flower

Flowers are made up of different parts that help them grow. Can you label the parts of the flower in the picture?



Naming Flowers

Sometimes we give plants names that describe what they look like or what they remind us of. Can you name these flowers in Tudor Place's garden?



What shapes do you see?

What color do you see?

Flower name: _____



What shapes do you see?

What colors do you see?

Flower name: _____



What shapes do you see?

What colors do you see?

Flower name: _____

Parts of a Flower Answer Key

Flowers are made up of different parts that help them grow. Can you label the parts of the flower in the picture?

